

NAVSAHYADRI

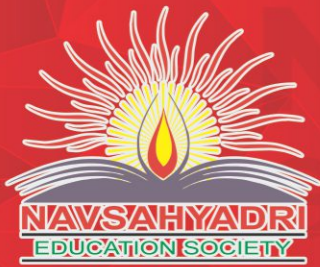
GROUP OF INSTITUTIONS



Corporate Brochure

www.navsahyadri.edu.in

- NAAC Accreditation with "A Grade"
- Approved by All India Council for Technical Education (AICTE) New Delhi, Govt. of Maharashtra, **DBATU, MSBTE, DTE & PCI**
- Affiliated to Savitribai Phule Pune University (SPPU), Pune.



NAVASAHYADRI

GROUP OF INSTITUTIONS

Pune (MH) India

Approved by AICTE, New Delhi Recognized by Govt. of Maharashtra
Affiliated to Savitribai Phule Pune University
DBATU, MSBTE, DTE & PCI

**Empowering Youth...
for a Better
Tomorrow...**





ABOUT US

The Navsahyadri Group of institutions has been established in the year 2010 with a vision to provide quality education to all merit holders. It is a rapidly growing institute under the umbrella of Navsahyadri Education Society. It consists of spacious building for various engineering departments, well equipped labs, canteen & mess spread over large area of land in Naigaon, Nasrapur Pune. The Philosophy of the institute is the overall development of students. The focus is on academics, research & innovation and to train the students for the best placement opportunities as well as to prepare them for other career options. As a part of academics we observe strict discipline in students attendance, teaching and regular assessment of students. The university results are among top 5 in SPPU. In research and innovation, we stand at top with 100+ patents and 300+ copyrights filed within ten years. Our students also participate in co-curricular & extracurricular activities like BAJAJ, Go Kart, Robocon, TIFAN, Purushottam Karandak, Firodiya Karandak, Dajikaka Gadgil Karandak, etc.



The entire globe today is witnessing and experiencing the mind boggling Scientific and Technological developments like artificial intelligence, internet, web management on one hand and total chaos, confusion, clashes, conflicts, terrorism, bloodshed and massacre in the name of caste, creed or religion on the other hand. Disregard for ethical, social, moral, cultural and ecological values is deeply rooted in the 'indifferent' and 'I don't care' culture. The youth of today believes in revolt and action rather than patience and tolerance. In midst of this challenging environment, in order to promote good character building among the young generation, Navsahyadri group of Institutions strictly follows the ethos of value-based education.

The NESGI values its intellectual and academic relationship with local as well as national industrial community that forms its base and provides the foundation from which it will continue to look to the widest international horizons, enriching both itself and the society of which it is an inseparable part. The students have higher prospects of learning the latest tools and technologies in their chosen fields of specialization, in developing themselves into worthy professionals. Higher emphasis is laid in imparting value based education by sensitizing the students to the rich Indian ethos of respect for parents and teachers (Pitra devo bhava, Guru devo bhava), compassion for fellow beings (Vasudhaiv kutumbhkam) and concern for environment and world peace (Om shanti, Om Shanti, Om Shanti). I am confident that the students of NESGI with wide exposure to academic and professional fields will leave a mark of their services, wherever they go, by exhibiting their sound professional knowledge, unimpeachable character, sense of discipline and commitment.

Hon. Mr. Popatrao N. Suke

Founder President NESGI, Pune.



Navsahyadri Group of Institutions, promotes excellence in Higher Education to meet national & global challenges, towards accomplishing its mission of nation building crafted by our founder President. The NESGI in pursuance of the unique and pioneering approach of providing world quality multidisciplinary education offered at one campus, presents opportunity of holistic development to the students in preparing them to meet challenges of dynamically changing technical and social environment and finding right and timely solutions.

The Campus has state of the art infrastructure comparable to the best in the world is housed in serene and scenic campus that has the soul of the ashram like ambience that promotes scholastic learning combined with rich value system to develop responsible and socially sensitive global citizens. The students, besides being blessed with acquiring latest knowledge through learner centric pedagogy delivered by a dedicated team of highly qualified and accomplished faculty and staff, are presented a bouquet of engaging curricular, extra – curricular & extension activities. The NESGI presents the industry and society with “Day-one-job ready” professionals through the dedicated team of accomplished faculty and staff in collaboration with partnering reputed research institutions / organizations within India & abroad. We, at NESGI, emphasize on making our students future ready by nurturing multiple intelligence through integral education: Physical; Intellectual; Emotional; Psychological and Spiritual aspects along with Innovation and Creativity; Values and Spirituality to develop into whole personality.

Mr. Sagar P. Suke
Group Director, NESGI, Pune.



500+
Employees

10+
Institutes

10000+
Students

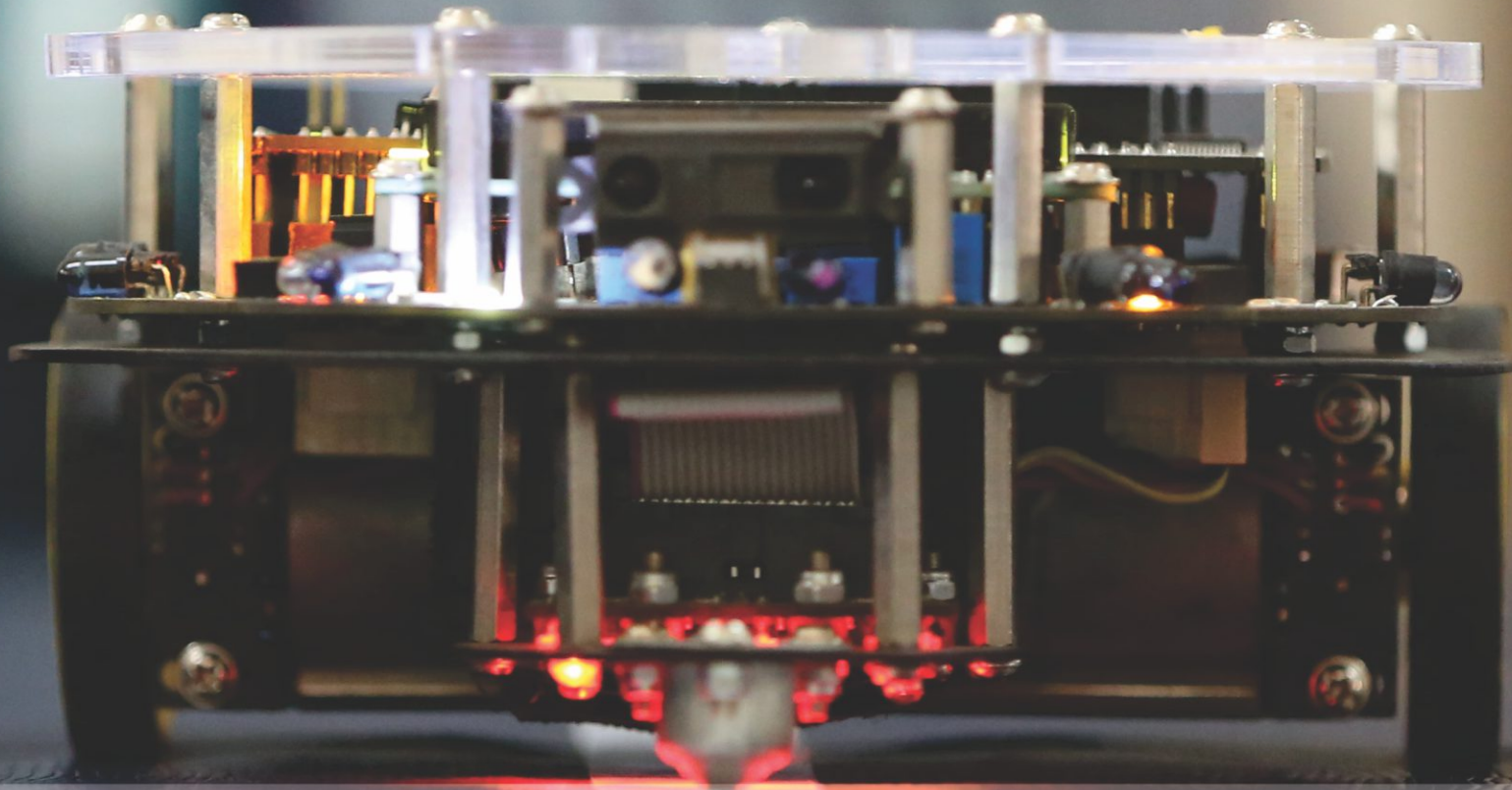
15000+
Alumni

7000 +
Placement

500+
Recruiters

15 YEARS OF
ACADEMIC
EXCELLENCE





VISION

To empower students with holistic & professional capabilities to get employment (inclusive of self employment) to 100% pass outs/ graduates through collaborative & field based training system.



MISSION

To offer education & training for development of competencies & prepare professionals for successful employment & capabilities to deal with professional & social life by adopting student centric education system.



QUALITY POLICY

To provide all rounded skillful and engineers with intellect and knowledge along with positive perspective.



**Hostel Facilities &
Medical Assistance**



**Recreation &
Wi-Fi Facilities**

FACILITIES

ON CAMPUS



**Cafeteria &
Appetizing Mess**



Transportation

You Name it, We have it !

RECREATION FACILITIES

Our massive cricket ground has ultra-modern facilities and equipments. We inculcate a sporting spirit in our students through regular intra and inter college competitions. We discover and promote sportsmen from our campuses.

The open-air theatre is an apt place for expressing talent and exploring the artist within you. We have Wi-Fi enabled campuses for instant connectivity with the world on our fingertips. In a tech enabled world we believe in continuous updation.

TRANSPORT SERVICES

NESGI provides transport to all the students. Also bus facility of Local Govt. (PMT) is also available to the campus.

HOSTEL FACILITIES

Ample accommodation facilities in different types from spacious to planned cozy personal, are thoughtfully created, on most of the campuses to take care of its residents. Special Hostel with top of the line amenities and sophisticated interiors exist for foreign nationals.

MEDICAL ASSISTANCE

Health is a top priority at Institutes. We have free medical checkup for all students.

PREPARING STUDENTS

From Campus to Corporate



1

Self Awareness

Using In-depth SWOT analysis for knowing self; EQ tests & assessments for building self-worth; stress management techniques for coping strategies; teaching & learning through holistic approach to enhance self-awareness.



2

Learning

Channelising Energies for constructive purpose & cohering focus for competency building by wading through a welter of activities and events like: Spectrum, MIS Design, I3, Webinars, Conferences, Workshops, Simulations, Role Plays and Innovative value added courses. Co-curricular activities like analysing and solving Harvard Case Studies, Intel Certification, Bloomberg, Microsoft, Six Sigma Certification, HR Panel Discussion, Buzzicon and WOW Competitions.



3

Grooming

Harnessing competencies for skill acquisition, customized formal training in cultural sensitivity and manners & etiquette for cultural finesse.

Ongoing participation and involvement in STP, SOC, and SSC. Furthermore, alumni interface and mentoring imparts personality enhancing experience.



4

Performing

Corporate reading and publishing for projects, assignments, SIP & WIP to test & hone skills and grit, alongside learning through observation for specialization and multitasking by way of employability tests, aptitude tests, mock interviews, GDs, debates, role-plays, negotiation plays and counter plays contests and talk shows (intra class).



5

Placement

Proof of professionalism: Geared to take on challenges and responsibilities, gaining on professional edge for matured dealing and cultural conduct by availing Placement opportunities.

Inputs and Training for streamlining career paths.



ACADEMIC EXCELLENCE

Institutes provide quality education equipped with state of the art infrastructure, industry participation, and vast in-house intellectual capital. Institute has provided exemplary education to students from all over India and abroad over the years.

Institutes is one of the flag bearers of change in the field of education, developing a “Can-do” entrepreneurial spirit and helping the young generation to contribute and shape the destiny of modern India.

Global engagement is a new mantra at Institutes, and with the help of technology we have benchmarked ourselves with international standards.



Faculty

Lifelong learning is critical for faculty to stay abreast in their field. Conferences, workshops, continuing education activities and mentoring relationships provide important professional development opportunities. At Institutes we strongly believe that Faculty Development Programmes (FDP) provide a robust institutional framework that includes a broad range of activities to help renew and assist faculty in their multiple academic roles. These activities / programmes are designed to improve the knowledge and skills essential to perform as educators, and to assist faculty members in gaining a better understanding of academic career development, mentoring, and leadership. Our array of faculty development programmes provide both seasoned and young educators with the essential tools they need to instruct, guide, train, facilitate and mentor. The ultimate goal is to enhance student learning and thus impact the quality of future business leaders.

Student Training Program (STP)

Worldwide, the advancement in technology has not only revolutionized the scope of education, but also redefined the expectations from graduates.

Institutes, the need was identified to start an innovative “Student Training Program” that would help the students build a personality equipped with requisite technical and non-technical skills. With this in mind a state of the art “Student Training Program” is being implemented. The objectives of this program are:

- Enhance the employability opportunity,
- Prepare students for entrepreneurship
- Prepare students for higher education in India as well as abroad.



Research

NESGI Institutes has premier multi-disciplinary research centers, with excellent infrastructure for advanced Research and Development with experts from the entire spectrum of Management, Pharmacy, Engineering related areas. Research papers written by scholars and experts from the international research community are published in our journals. Several conferences and symposiums have been hosted by the research departments, for learning through sharing. It also conducts regular training programmes for researchers.

Developing New Knowledge Through Innovation

Total Research Funding	5 Cr.+
------------------------	--------

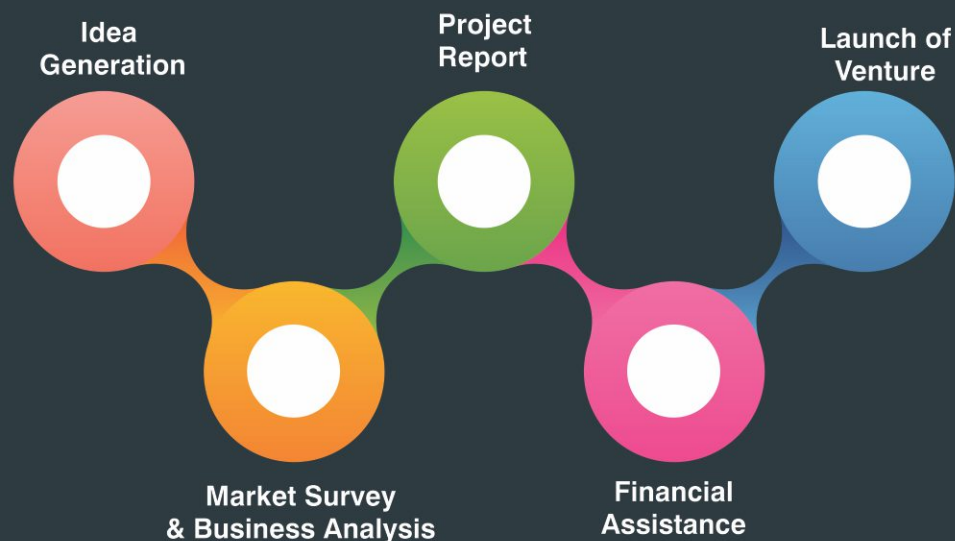
Total Number of Patents	100+
-------------------------	------

Total Research Projects	500+
-------------------------	------

EDP Entrepreneurship Development Programme

Highlights

- Entrepreneurship Awareness Camps
- FDP On Entrepreneurship
- Business Plan Competition
- Seminars for Entrepreneurship Awareness
- Inspiring Lecture Series from Eminent Entrepreneurs
- Workshop on Idea Generation
- Workshop on Opportunity Evaluation
- Business Planning and Training
- Legal Awareness for Budding Entrepreneurs
- Project Idea Competition
- Seminar on Patent Registration
- Workshop on IPR For Faculties as well as Students
- Workshop on Company Registration
- Industrial Visits



Entrepreneurship Awareness

Today, risk-taking characteristics have improved, especially among the youth. It is good for the Indian economy and for a country that is trying to shift from a developing one to a developed one.

Institutes are geared up to encourage self-employment in all spheres for student start-ups. We have started the process of promoting and strengthening entrepreneurship amongst science and technology target groups across our resourceful campuses by organizing entrepreneurship awareness camps to foster skill development. We are also mapping our resources best to kick off Entrepreneurship Development Cell to assist students and qualified people to perform technical and financial feasibility studies for checking the viability of their ideas to start-ups, and also to lend a hand to them for preparing bankable projects in the right format.

CONSTITUENT INSTITUTIONS NAVSAHYADRI CAMPUS (PUNE) ARE



Navsahyadri Institute of MBA and MCA

Navsahyadri Institute of Engineering and Polytechnic

Mechanical Engineering
Civil Engineering
Computer Engineering
Artificial Intelligence and Machine Learning (AI&ML)
Electrical Engineering
Electronics & Telecommunication (E&TC)

Navsahyadri Institute of Pharmacy

D. Pharm. | B. Pharm. | M. Pharm.

Navsahyadri Law College

LLB

Navsahyadri Senior College

B.Com. | BBA | BCA | BCS | B.Sc

Navsahyadri Junior College

(Board + IIT-JEE | NEET | MHT-CET Entrance examination)

Navsahyadri School

(KG to X Standard)



Management (MBA,MCA & MBA++)

We at Navsahyadri Education Society's Group of Institutions, Faculty of Management, strongly believe that only syllabus based education is not sufficient enough for the students to get better placements. They need certain employability enhancement programs to achieve what they desire. Hence, we have introduced an elite program called, MBA +. In addition to the regular MBA from Pune University, we provide such value added certifications, which will not only help them to enhance the employability but also to get the best jobs in the beginning of their career itself.

Diploma Program in Strategic business Management from Zurich City Business School Strategic Business Management course was designed to keep in mind the requirements in International Market. It not only covers the European perspective, but also focuses on Global Business Model. The course is not only helpful for the Management Students, but also for the working professionals. The contents will be delivered through our Learning Management System, Claned; the intelligent learning platform.

ZCBS is a Swiss Federal Registered College and accredited by European Credit Transfer and the Accumulation System (ECTS).

Common Certifications

MS Excel-Basic & Advance

Entrepreneurship & Leadership Program

Business Model Cases

Business Intelligence & Analytics

Specialization Specific

Marketing Management
Digital Marketing
(Basic & Advance),
Retail/ Sales &
Distribution Management

Financial Management
Capital Market, Financial
Modeling, Advance Financial
Management

HR Management
Recruitment & Selection,
Competency Mapping,
HR Analytics

Operations & Supply Chain
Management AAA Agile
Framework
Supply Chain Analytics

X-Culture Global Collaboration Certificate
X-culture Collaboration has an association of 100+ universities or institutions from 43+ countries of 6 continents. It puts students into international teams of about 7: usually 7 students, 7 countries. They work as a global virtual team for two months on a business project, where they will actually work and solve a business problem of a company related to international business and expansion. X-Culture was launched in 2010 by Dr. Vasyl Taras from University of North Carolina, USA.

MANAGEMENT

Approved by AICTE,
Recognised by Govt. of Maharashtra &
Affiliated to Savitribai Phule Pune University

SALIENT FEATURES OF NAVSAHYADRI MANAGEMENT INSTITUTE

CASES

Cases present challenges confronting business organizations and place the learners in the role of a decision maker. The vibrant process of case discussion enables exchange of perspectives, contradiction and defense of view points, and building on each other's ideas. The learner becomes proficient at examining issues, applying judgment, and making tricky decision - the trademark of competent managers.

ARTICLES

Articles expose the faculty and students to innovative and emerging thoughts for improving management practice. Written by thought leaders and practitioners from around the world, these articles provide a window for forward-looking ideas and their real-world applications.

WEBINARS

Webinars including videos, speeches, lectures and seminars on topics like innovation, education, leadership, & business widen knowledge horizons seamlessly on a global higher education learning platform. Faculty and experts from around the world share knowledge through courses and programs help students learn and develop from it.

SIMULATIONS

Online simulations enable NESGI students to use real-world contexts to reinforce student learning. Flexible setup options create learning experiences in multiple specializations. They provide a chance for recurring practice, giving learners boundless opportunities until skills have been mastered.

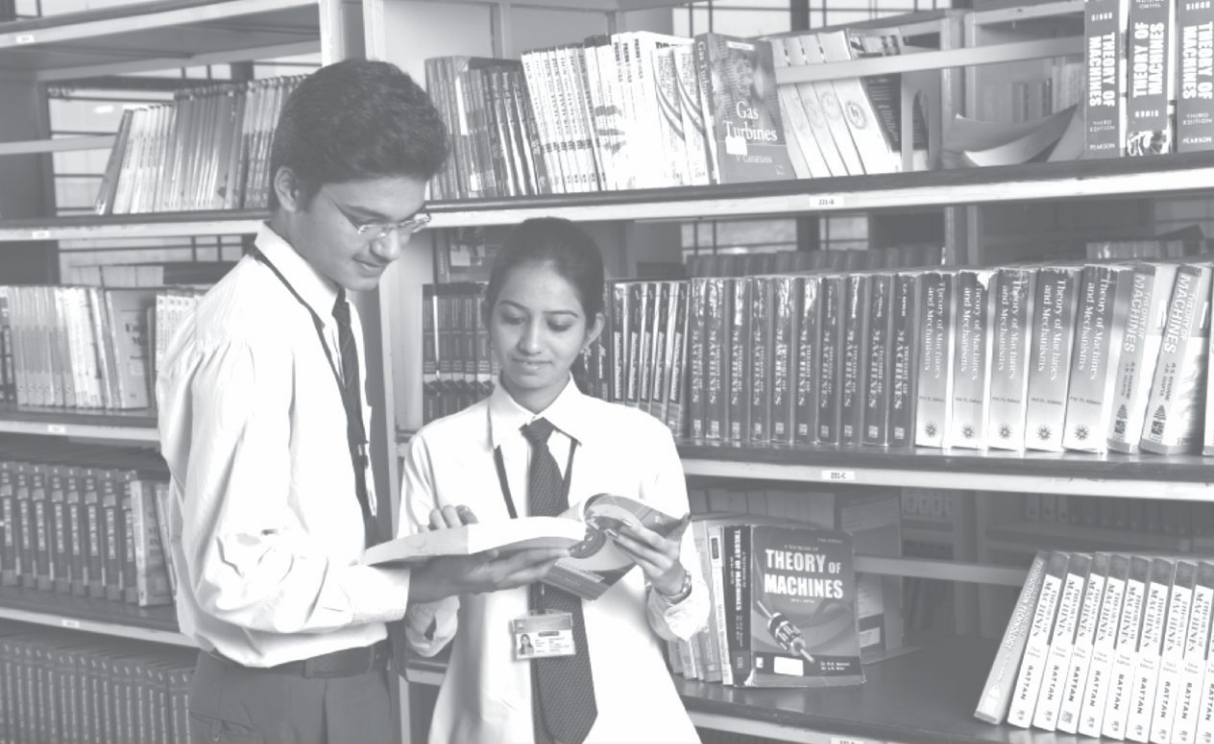
ROLE PLAYS

Replication of a real business situation through role-plays allows students to experiment and enhance their understanding of theories and concepts. Students perform real-world role in specific business situations and interact with other students who also play characters in the exercise.

INNOVATIVE COURSES

Alliance with HBSP enables online learning opportunities for NESGI students through various course modules. Spreadsheet modeling and Management Communication facilitated global learning perspectives, crucial for operating in contemporary boundary-less market spaces.





MBA/MCA

Duration - 2 Yrs. | Intake - 180

Navsahyadri Group of Institutes – Faculty of Management aims to prepare students for tomorrow, equipping them today with the right knowledge, skills and attitude that will help them be effective in any venture they choose, nurturing and developing them to become good individuals who are sensitive to the society around them.

Learning and teaching in the management school covers all aspects of management. There is very experienced faculty and pedagogy followed is very innovative. There is lot of emphasis on learning by doing.

With over 15 Specializations to choose from, the course is one of its kind!

COURSES AVAILABLE

- Marketing Management
- Human Resource Management
- Financial Management
- Banking and Insurance Management
- Supply Chain Management
- Operations Management
- Information Technology Management
- Retail Management
- International Business Management
- Digital Media & Communication Marketing
- Entrepreneurship Development
- Technology Management
- Tourism and Hospitality Management
- Services Management
- Healthcare Management
- Family Business Management
- Rural & Agribusiness Management
- Defence Management



ENGINEERING & POLYTECHNIC

**ELECTRONICS &
TELECOMMUNICATIONS
ENGINEERING**

**COMPUTER
ENGINEERING**

**MECHANICAL
ENGINEERING**

**CIVIL
ENGINEERING**

**ELECTRICAL
ENGINEERING**

**AI / ML
ENGINEERING**

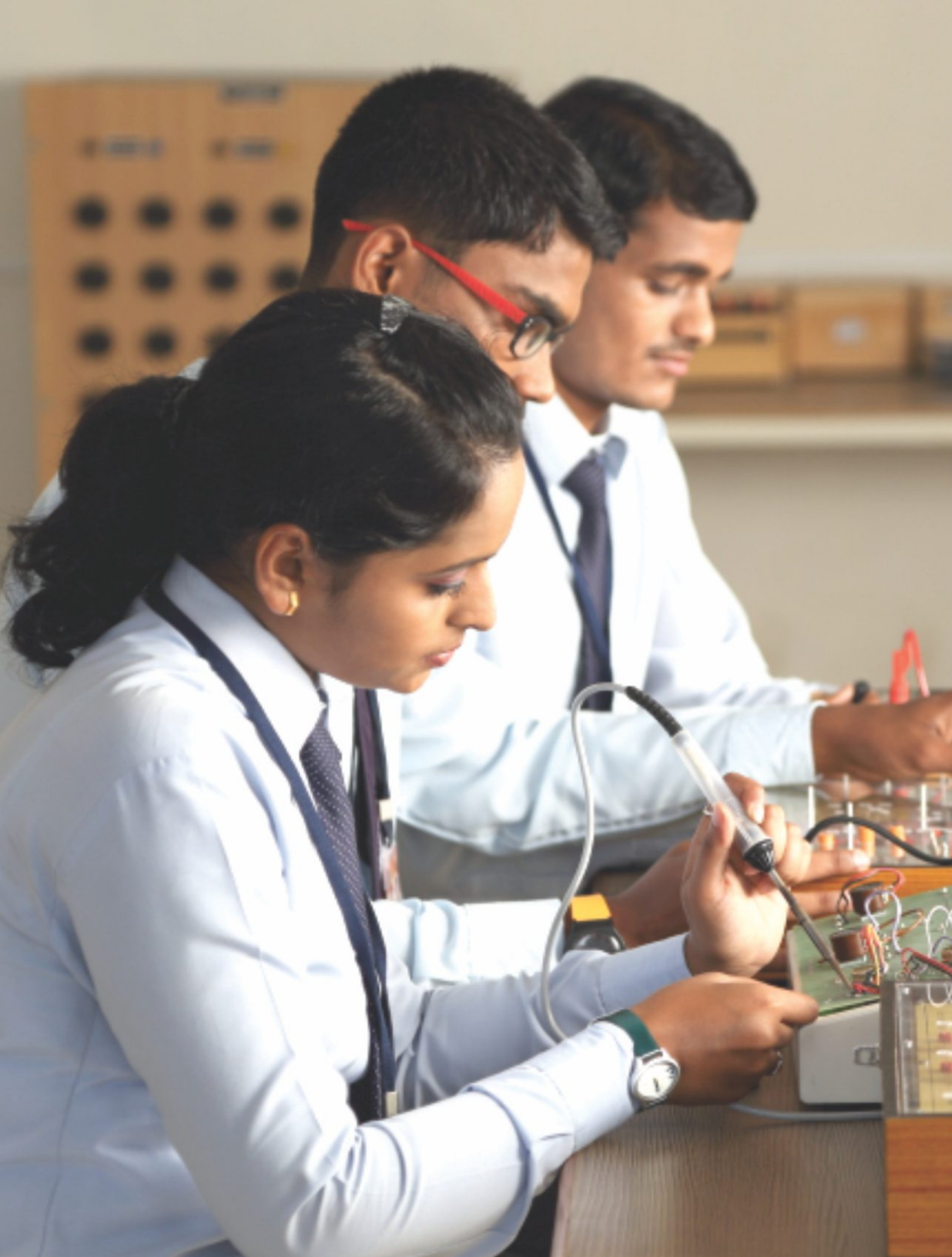
Salient Features of Engineering & Polytechnic College

- 100+ recruiters visits every year.
- Group has More than 10000+ Engineering Alumina.
- 10 + Foreign University collaborations.
- Exposure to Hackathons, Accelarassors , Robocon, Tesala
- Highly Qualified faculty with Industry expert lecture series.
- Value-added Certifications with the availability of e-learning platforms.
- Blended Learning with classroom teaching & e-learning platforms.
- Modern Laboratories with strong industrial alliances.

FACILITY

- Smart & Flipped classrooms
- Digital Library with 24X7 Intranet facility
- Mess & Hostel Accommodation
- Modern Laboratories with Strong Industrial Alliances
- World Class sport complex
- Transportation & 24X7 Medical facility





ELECTRICAL ENGINEERING

Electrical Engineering is a field of engineering that generally deals with the study and application of electricity, electronics and electromagnetism.

This field first become an identifiable occupation in the latter half of the 19th century after commercialization of the electric telegraph, the telephone and electric power distribution and use.

E&TC ENGINEERING

Electronics and Telecommunication Engineering is a field that involves complex electronic apparatus, circuits and equipments that help in executing speedy and efficient tele communication systems.



MECHANICAL ENGINEERING

Mechanical Engineering is the discipline that applies the principles of engineering, Physics and material science for the design, analysis, manufacturing and maintenance of mechanical system. It is the branch of engineering that involves the design, production and operation of machinery. It is one of the oldest and broadest of the engineering disciplines.



CIVIL ENGINEERING

Civil Engineering is a professional engineering discipline that deals with the design, construction and maintenance of the physical and naturally built environment, including works like roads, bridges, canals, dams and buildings. Civil engineering is the second-oldest engineering discipline after military engineering

COMPUTER ENGINEERING

Computer Engineering is a discipline that integrates several fields of electrical engineering and computer science required to develop computer hardware and software. Computer Engineers usually have training in Electronic Engineering (or Electrical Engineering), software design and hardware software integration instead of only software engineering or electrical engineering

AI / ML ENGINEERING

India is rising and shining bright when it comes to adopting new and emerging technologies. Enterprises from almost all major industry verticals are hiring AI and data science experts to help them garner actionable insights from big data. The analytics sector has witnessed a sharp increase in demand for highly-skilled professionals who understand both the business world as well as the tech world. Organizations today are on a constant lookout for such professionals who can fill this ever-growing dearth in talent.



PHARMACY

D. Pharmacy - Duration - 2 Yrs.

B. Pharmacy - Duration - 4 Yrs.

M. Pharmacy - Duration - 2 Yrs.

(Splz. - Pharmacology, Pharmaceutics)

B.Pharmacy is a 4 year program and D.Pharmacy a 2 year programme leading to a Bachelor's degree and diploma in Pharmacy respectively. The program as per university's guideline which helps trains the students to play an important role in Pharma community and assist the pharmaceutical industry at various levels. The course is predominantly based on practice and interaction with a strong focus on the healthcare system. This will enable students to practice pharmacy profession in a strong, skillful and determined manner.

FACILITIES AVAILABLE

- Experienced and vibrant faculty.
- Regular interaction with community pharmacy and industrial pharmacy experts
- Opportunity to use and witness post graduate and research infrastructure at under graduate level
- Guidance and counseling from faculty members
- Placement focus in Pharmaceutical industries, Hospitals, Patent cells, IPR sections, Clinical Research Organizations, Retail Pharmacy and other opportunities



CAREER OPTIONS

- | | |
|------------------------------|--------------------------------------|
| • Production & Manufacturing | • Opportunities Abroad |
| • Research & Development | • Clinical Trials |
| • Analysis & Testing | • Documentation, Library Information |
| • Hospital Pharmacy | • Services & Pharm Journalism |
| • Regulatory Affairs | |
| • Drug Inspection | |
| • Marketing | |
| • Academics | |
| • Consultancy | |
| • Community Pharmacy | |





NAVSAHYADRI LAW COLLEGE

*Bachelor of Legislative Law (LLB)

Navsahyadri Law College is a community of Students & Staff dedicated to bringing out the best in all of its members. Our aim is to provide the finest opportunities & environment for teaching, learning & research. We have a distinguished record of academic excellence and innovation since the foundation of the college. The basic principle behind the foundation of Navsahyadri Law College was to establish a regularized system of imparting legal education. Staying true to it we have endeavored and achieved this ambition and maintained our standards of excellence. We believe in creating a relaxed and flexible environment to allow students to grow and develop at their own pace. The courses offered here are a product of critical thought and careful experimentation over many productive years. We offer an education characterized by a mixture of theory and practice and a commitment to public service. This college has always been a firm believer in innovation, both in pedagogy and curriculum.

At this college, we give special emphasis on perspectives and insights from other disciplines and encourage an integrated approach to law and an exploration of the legal profession's social-economic role and ethical commitments.

Salient Features

- Qualified and Experienced Faculties of Repute.
- Modernized Automated Library.
- Personality Development and Special English Learning.
- Moot Court Practice and Competition.
- Legal Aid Training.
- Special and Remedial Classes.
- Fully Equipped Computer Lab.
- Free Wi-Fi Campus.
- Regular Seminar/Symposium.
- Educational Visits and Training.

Subject to approval

NAVSAHYADRI SENIOR COLLEGE

Bachelor of Business Administration (BBA)

Bachelor of Computer Application (BCA)

Bachelor of Computer Science (BCS)

Bachelor of Commerce (B.Com)

Bachelor of Science (B.Sc.)



NAVSAHYADRI JUNIOR COLLEGE

Recognized by Govt. of Maharashtra | Approved by MSBSHSE, Pune

**Most Trusted Brand for IIT-JEE / NEET / MHT-CET
with Perfect Academic Preparation**



11th & 12th SCIENCE IIT-JEE / NEET Integrated Course

NAVSAHYADRI GURUKUL

Recognized by Govt. of Maharashtra | Approved by MSBSHSE, Pune



Results: 100%

10th



$$A + B = C^2$$

Higher-Secondary

Secondary

Primary

Pre-Primary



```
graph LR; A[GUIDANCE] --> B[TRAINING]; B --> C[PLACEMENT]
```

GUIDANCE

TRAINING

PLACEMENT

CAREER DEVELOPMENT CELL (T&P)

The objective of the department is to develop potential among the deserving students to make them future ready and develop them to take care of role and responsibility, at various job profile and job roles.

The department is centre of career counseling, over all development of students working closely with all other Branches of our Engineering and Diploma campus developing

future ready engineers.

The Career development cell (T&P) at NESGOI is facilitated by Central Training and Placement officer as Head along with Managers- Corporate Relation and the Departmental Training and Placement officer as Coordinators to work in tandem with various Branches.

The following are the building blocks and pillars of Placement and career development cell

TRAINING

Training is the integral part of Career development cell. We have provided over all 100+ hours of In house

training which includes Aptitude Test, Group Discussion, Personal Interview, Personality Development, Behavioral skills, Etiquette and Manners, Career Planning from leading trainers as well as Subject Experts. Few of Training done by leading Speakers.

GUEST LECTURE

We organize Interactive session of eminent personalities, Entrepreneurs', Government officials which enhance the career and Knowledge prospective of students hence enriching students with the latest updates of the Industries and technicalities, Effective communication skills, resume building. The students are bestowed with knowledge about Industry needs, Latest technical updates, Avenues for higher studies etc.

Industrial Visit

Career Development cell keep on arranging Industrial visit to companies. Few snaps of the meeting. Training / Industrial Tie-Up

An Important part of training is Industrial Tie-up with various organizations we have Industrial with

- 1) Barkelys – GTT: A leading service provider for career enhancement, Industrial visit and skill Development Company based in Pune.
- 2) Wadhvani Foundation: A Leading NGO which is based in Mumbai. The company work on Entrepreneurship development among the engineering students.
- 3) T Edge Solution: A leading skill development and Placement company based in central India.
- 4) IT – Gyani: A Pune based organization which is into leading edge technology solutions for students.

CAREER DEVELOPMENT CELL (T&P)

SOME OF OUR PLACEMENT PARTNERS



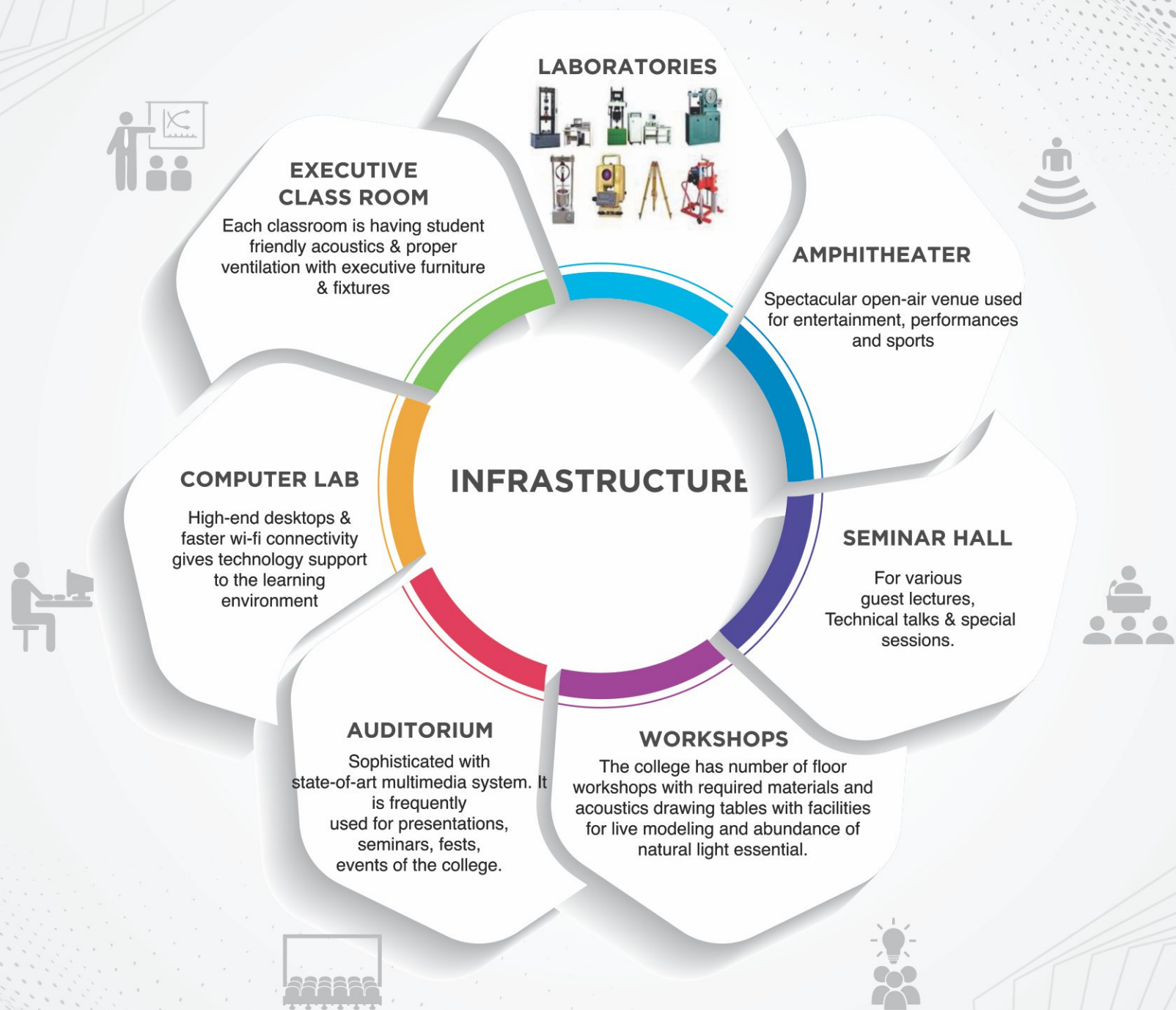
Industry Institute Interface

Industry Institute Interface, at NESGI Institutes, has a unique distinction, that of supporting both – our students as well as the industry, for a long term win-win partnership. Multiple initiatives undertaken to help bridge the gap between the industry requirements and the skill set provided by the institution to build a bright career for the students. In addition the power of academic knowledge in multiple and interdisciplinary domains is utilized to support individual business organization to fulfill efficiency and growth aspirations.

Outbound learning programs like industry projects, internships and industrial visits provide on-site learning environments, which enables learners to put into practice classroom learning. Live projects which are carried out along with classroom sessions, in turn, ensure effective theoretical internalization as learners simultaneously practice what is preached. Our seminar / workshop sessions provide students direct exposure to industry best practices. Students deliberate their goals and concerns with experts from corporate world from their chosen area of specialization and sector. The CEO series builds top level corporate interactions with the students and enables them to understand strategic challenges. Corporate mentors coach aspiring students towards their desired corporate goal through Corporate Mentorship Program and Pre-placement Training Modules. This continuous engagement with the corporate world makes it easy for learners to understand real work-life application of theory and prepares them for volatile and unpredictable business realities.

500+ Recruiters





KNOWLEDGE BANK

Library of Navasahyadri Group of institute is served as a resource center for teaching staff, students and research scholars by providing knowledge through both print and digital form. Library intends to incorporate the latest technology & adopt user friendly towards students and faculty. Library is well equipped with a large collection of textbooks, reference books, technical journals, educational DVDs and CDs as well as with latest information technology tools for information collection, processing and retrieval. The collection of books, journals, e-journals, reports and other reading resources are adequate for not only domain specific resources but for also general resources. The library has Slim Software that supports all in-house operations.

Vision of the NESGI Library is to be a source of knowledge for advanced learning and Mission of NESGI Library is to provide conducive environment for learning by maintaining updated learning resources.

Role of Library: Library plays a critical role in supporting to the academic programs of the institute. Identifies Evaluates, Procures, and Processes and then makes these learning resources available to the faculty & students for their teaching, learning & research assignments.

**So the library is the Trinity of: 1.Learning resources
2.Faculty/Students 3.Library Staff**

Digital Library:

Library has a well equipped Digital Library with 27 computers to provide access to electronic resources, such as e-journals, e-books, NPTEL Online Lectures . The students and faculties can search, browse, download or print the article from e-journal or a portion from e-books.



1200+
Alumni
Entrepreneurs



Sports @ NESGI



LAWN TENNIS



YOGA



SWIMMING



CRICKET



FOOTBALL



BASKETBALL



TRACK & FIELD



VOLLEYBALL



TABLE TENNIS

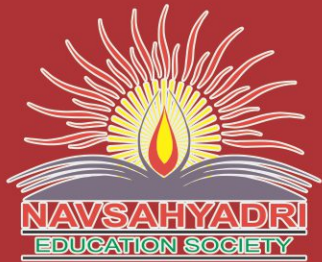


SKATING

NAVSAHYADRI AVISHKAR







Sr.No. 69, 70 & 71, Naigaon (Nasrapur),
Pune, Maharashtra, India.

Mob.: 7769927007 / 7769937007

Email : director@navsahyadri.edu.in

Websites:-

www.navsahyadri.edu.in

www.navsahyadrimba.in

www.navsahyadripharmacy.edu.in